



University of
South Australia



SAHMRI
South Australian Health &
Medical Research Institute

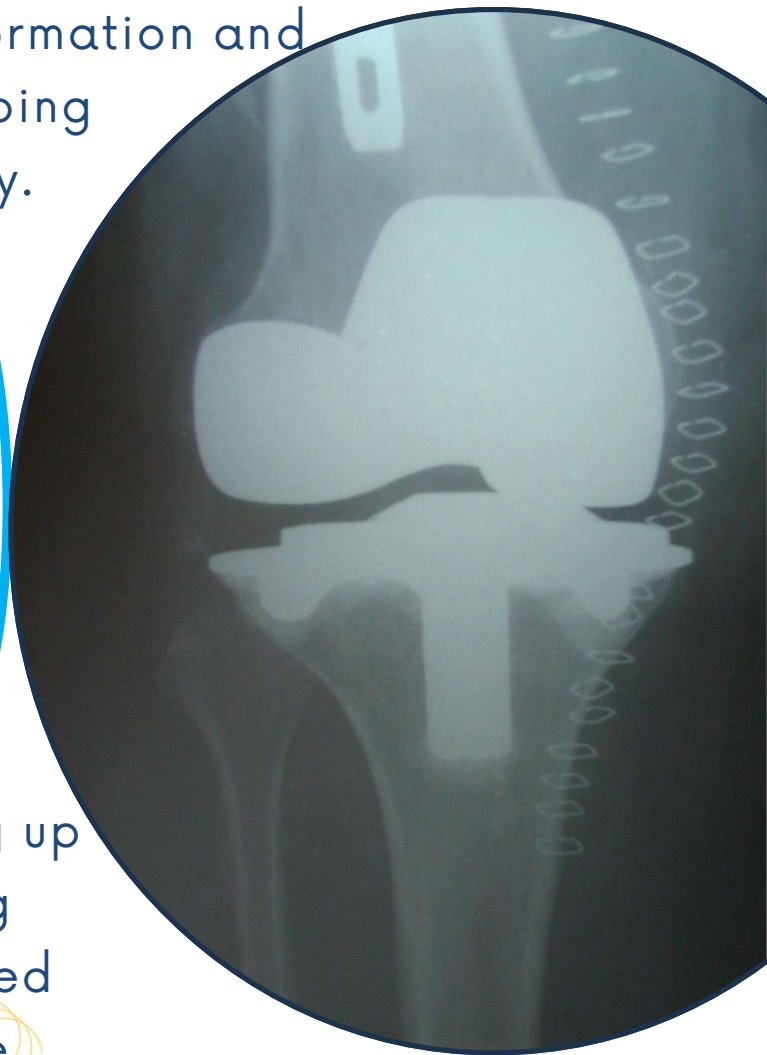
WHAT INFORMATION AND SUPPORT DO PEOPLE UNDERGOING TOTAL KNEE REPLACEMENT SURGERY NEED?

UniSA and SAHMRI researchers are seeking participants to enroll in a co-design study that aims to understand the information and support needs for those undergoing Total Knee Replacement Surgery.

YOU ARE ELIGIBLE IF YOU:

- Have had a Knee Replacement Surgery, or,
- Have Osteoarthritis and are considering a Knee Replacement surgery, and
- Can communicate in English (spoken and written)

Participation involves attending up to 3 in-person workshops lasting ~2.5 hours. You will be reimbursed \$100 per workshop for your time.



**IF YOU ARE INTERESTED IN PARTICIPATING OR LEARNING MORE,
PLEASE TEXT OR CALL US AT 0491 743 348 / 08 8302 1365 OR
E-MAIL US unisa.researchvolunteers@unisa.edu.au or
caroline.taylor@mymail.unisa.edu.au**